



# Georgia Gayle Longstreth

JUL 12, 1924 - JAN 24, 2017



Scan to Visit



Bath-Naylor  
Funeral Home  
& Crematory

# Table of Contents

<b>Obituary</b> .....	Page 3
<b>Events</b> .....	Page 4
<b>Tribute Wall</b> .....	Page 5



# Georgia Gayle Longstreth

JUL 12, 1924 - JAN 24, 2017

**G**eorgia Gayle Longstreth, 92, formerly of Pittsburg, KS passed away January 24, 2017 in Fredericksburg, TX. She was born July 12, 1924 in Dade County, MO the daughter of Sug & Elva (Blankenship) Dodson. She was raised in the Dadeville & Greenfield, MO area & attended Greenfield schools.

She & Claud W. Longstreth were married June 21, 1952 in Bentonville, AK. They made their home in Lawrence, Kansas where Georgia was employed by South-Western Bell Telephone Company. In April 1972, they moved to Pittsburg, Kansas. They enjoyed traveling & the company of family & friends. Georgia especially enjoyed playing Mah Jongg. She was a member of the First Christian Church in Pittsburg.

After Claud passed in 2002, Georgia remained in Pittsburg. She was blessed to have her dear & best friend Ruby Myers & their family nearby. In February 2012, she moved to Texas & lived the rest of her days with her son & daughter-in-law.

Survivors include: Son, Jerry Longstreth & wife, Martha. Granddaughter, Trish Scroggs all of Fredericksburg, TX; stepdaughter, Ronda Hensley of Louisville, KY; three step-grandchildren: Michael (Francis) Simon of Fountain, CO., T.C. Hensley (Beth) of Mt. Washington, KY and Gayla Brewer of Louisville KY; seven great-grandchildren and four great-great-grandchildren.

Graveside services & inurnment will be 10 am Tuesday, March 7, 2017 at Newton Burial Park in Nevada, MO Rev. Pat Nixon officiating. Condolences may be left at [www.friskelfuneralhome.com](http://www.friskelfuneralhome.com). Memorials may be sent to S.E.K. Humane Society in care of Friskel Funeral Home, 230 E. McKay, Frontenac, KS 66763.




# Events


**Georgia Gayle Longstreth**

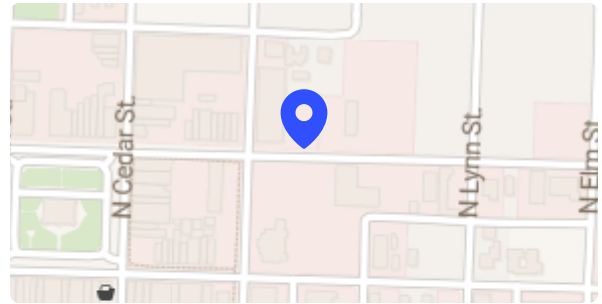
JUL 12, 1924 - JAN 24, 2017

## Graveside


 **Tuesday**, March 7, 2017

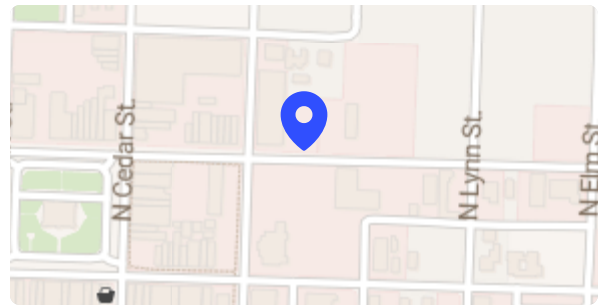
 10:00 AM CT

 **Newton Burial Park**  
Nevada MO



## Cemetery Details

 **Newton Burial Park**  
Nevada MO

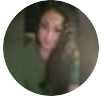




## Tribute Wall

**Georgia Gayle Longstreth**

JUL 12, 1924 - JAN 24, 2017



**Alexis Cortez** posted:

Georgia, you were such a beautiful lady inside and out and it was such a pleasure to get to know you and care for you. I'm gonna miss our conversations and your big hugs. Thank you for all the love you showed me. I'm glad to have cross paths with this beautiful family. My condolences to Jerry, Martha and Trish. My thoughts and prayers are with you all ❤️ - Alexis Cortez from Fredericksburg Tx.

March 6 at 3:03 AM



# Memories only last if you share them

Join us in honoring Georgia by contributing to a collection of shared memories.



Scan to Visit



Bath-Naylor  
Funeral Home  
& Crematory